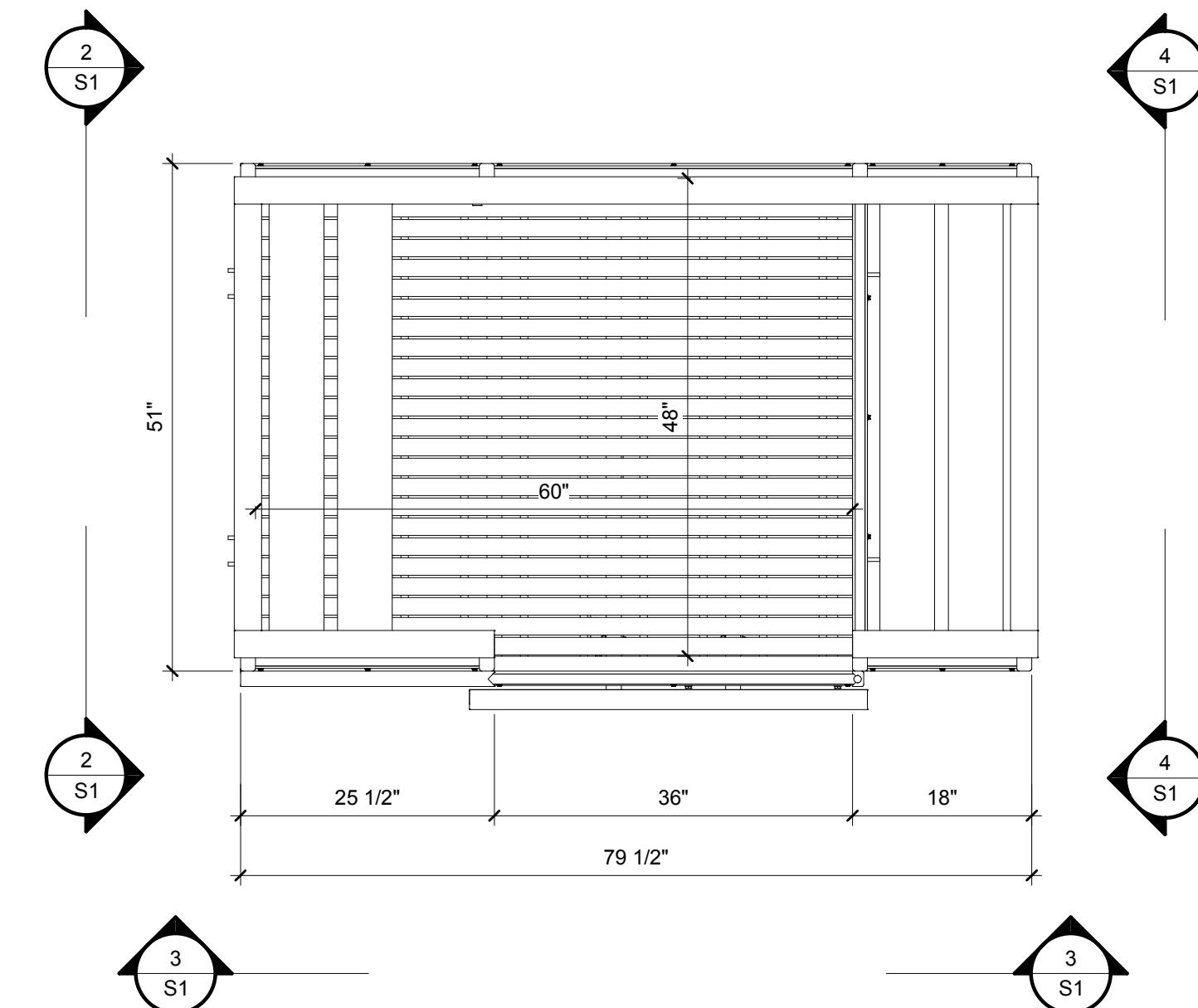




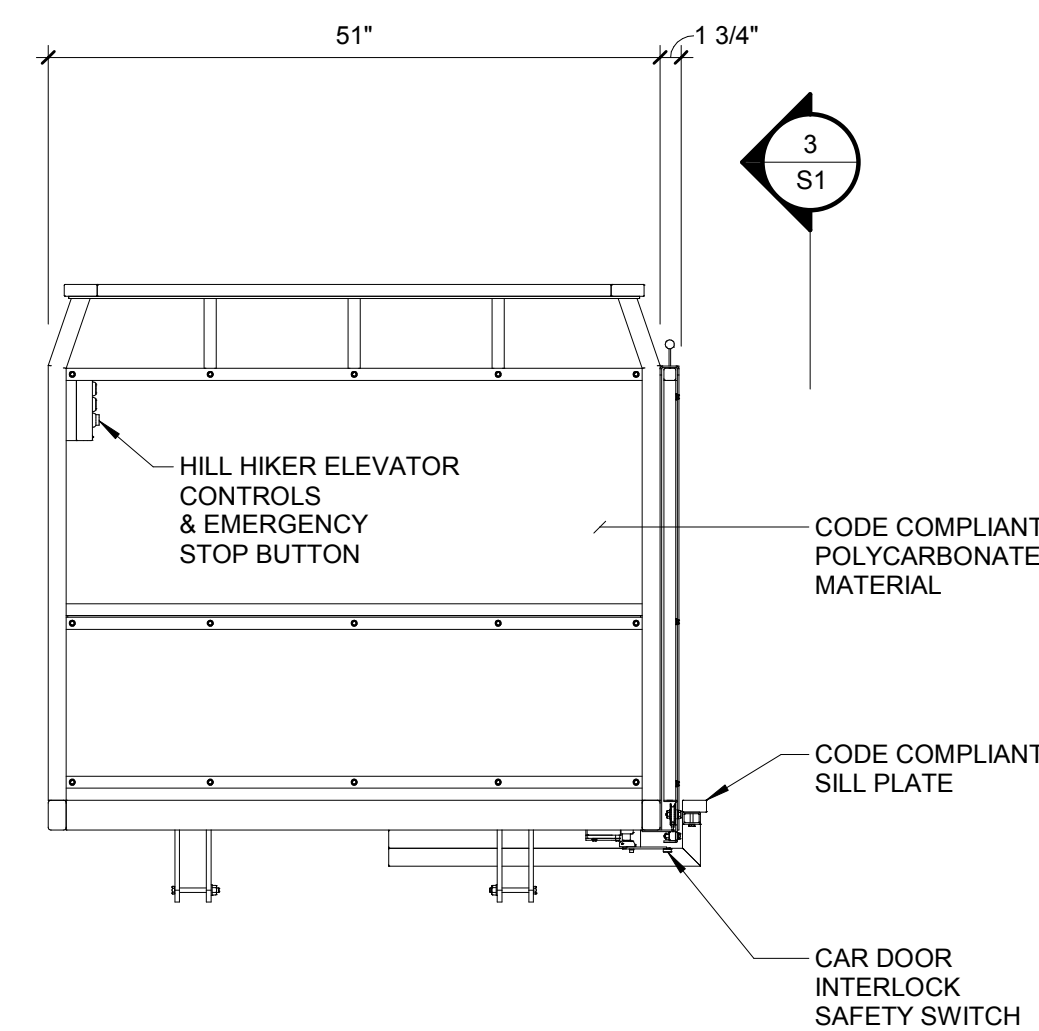
HILL HIKER ELEVATOR CONTROLS & EMERGENCY STOP BUTTON



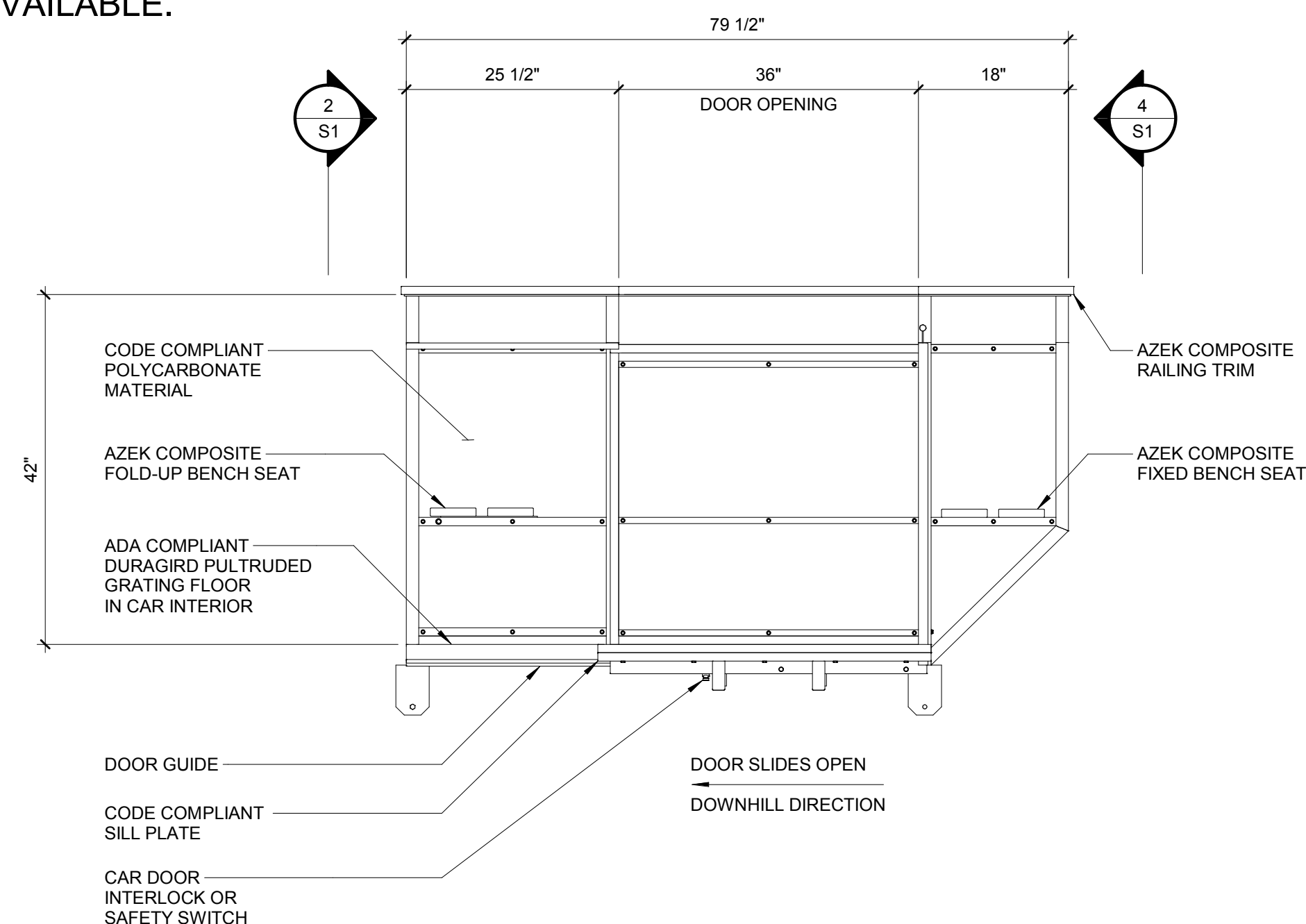
1
S1

CAR SHOWN
POWDER COATED STEEL: TIGER DRYLAC - GREY CLASSIC 314 38-70061
ELEVATOR CONTROLS: 2-STOP SYSTEM

NOTE:
ADDITIONAL POWDER COAT PAINT COLORS,
POLYCARBONATE TINTS, TRIM & SEAT COLORS,
FLOORING, AND DOOR OPTIONS AVAILABLE.



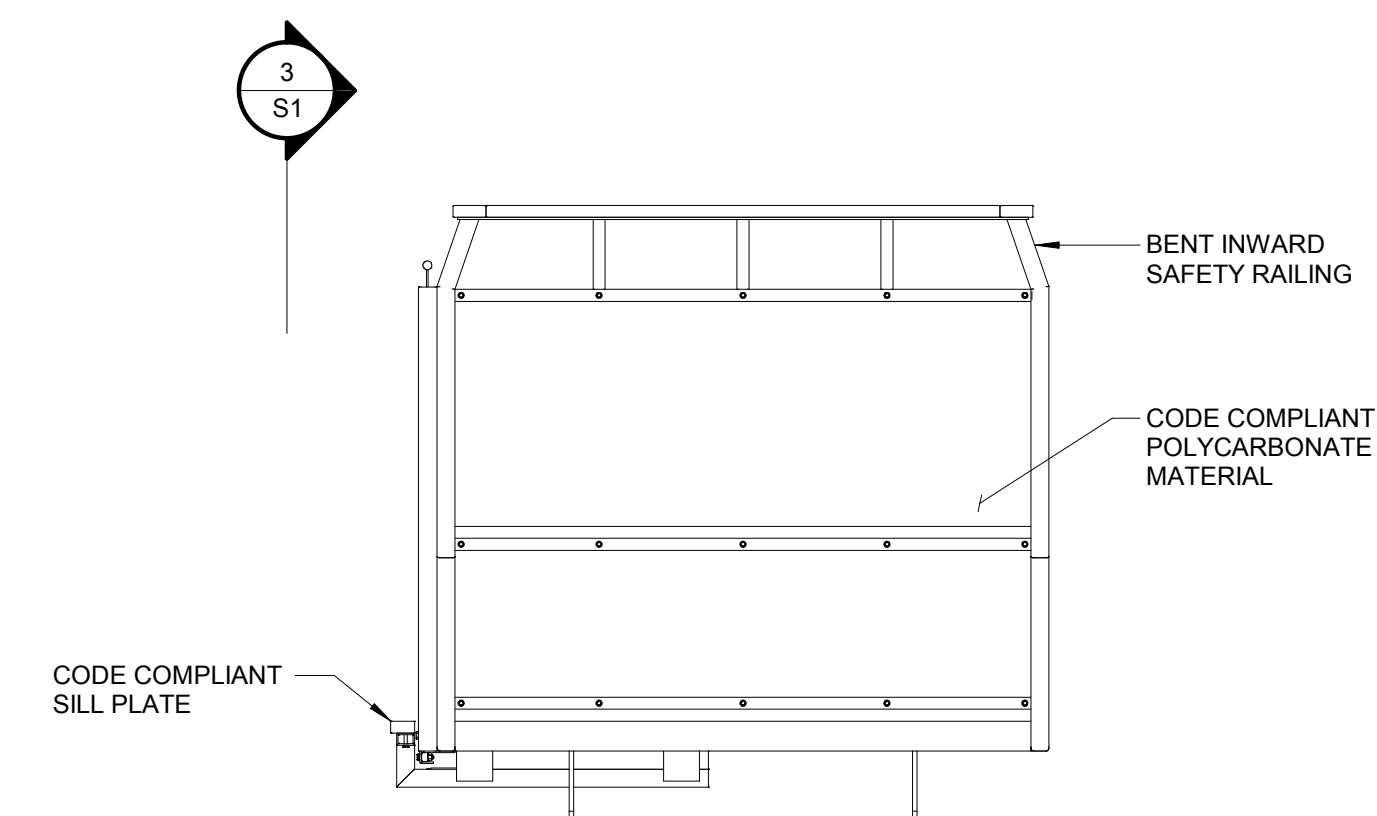
 ELEVATION (DOWNHILL END)
3/4" = 1'-0"



3
S1

SIDE ELEVATION

3/4" = 1'-0"



ELEVATION (UPHILL END)



Planners and Engineers 763.559.9100
2300 Berkshire Lane N, Suite 200 www.vaaeng.com
Plymouth, MN 55441 info@vaaeng.com

CLIENT:



HILL HIKER

3565 County Road 6
Orono, MN 55356

952.476.2422
www.hillhiker.com
info@hillhiker.com

PROJECT:

[illegible]

GENERAL DRAWINGS

FOR INFO ONLY

NOTICE: THE DESIGN SHOWN AND DESCRIBED HEREIN INCLUDING ALL TECHNICAL DRAWINGS, DETAILS, DEVELOPMENTS, GRAPHICS AND MODELS THEREOF, ARE THE EXCLUSIVE PROPERTY OF VAA, LLC, AND CANNOT BE COPIED, DUPLICATED, REPRODUCED OR COMMERCIALY EXPLOITED, IN WHOLE OR IN PART, NOR CAN ANY DERIVATIVE WORK BE MADE UNLESS EXPRESSLY AUTHORIZED IN WRITING BY VAA, LLC. COPYRIGHT VAA, LLC 2017 - ALL RIGHTS RESERVED.

DATE: 12/13/17		DESIGNED:	
DRAWN: DLF	CHECKED:	APPROVED:	

DRAWING TITLE:

EXTRA LARGE CAR (4x5) - LEFT
DOOR

PROJECT NO:

160177

SCALE:

AS NOTED

DRAWING NO:

31